



ISO 9001:2015 CERTIFIED CO.
ISO 14001:2015 CERTIFIED CO.



SUPERIOR EFFICIENCY

ADVANCE SAFETY

LONG-LIFE

Innovative Next Generation Technology

SCREW
Air Compressor



**5.5 KW
to
90 KW**

Never Stop your Air System

About Us

Air Care Equipments is India based company engaged in offering a comprehensive range of Air Compressors which have unmatched quality. Air Care Equipments is rated as one of the most reliable and reputed brands in High Pressure Air Compressors and Vacuum Pumps

We as a company, focus on growing and becoming successful by ensuring customer satisfaction. We have been successful in achieving this by constantly improving our product quality and new product developments. Using modern design and manufacturing techniques has been our strength. We have been, and shall always ensure that our products meet the national and international standards of quality and performance.

Our Mission

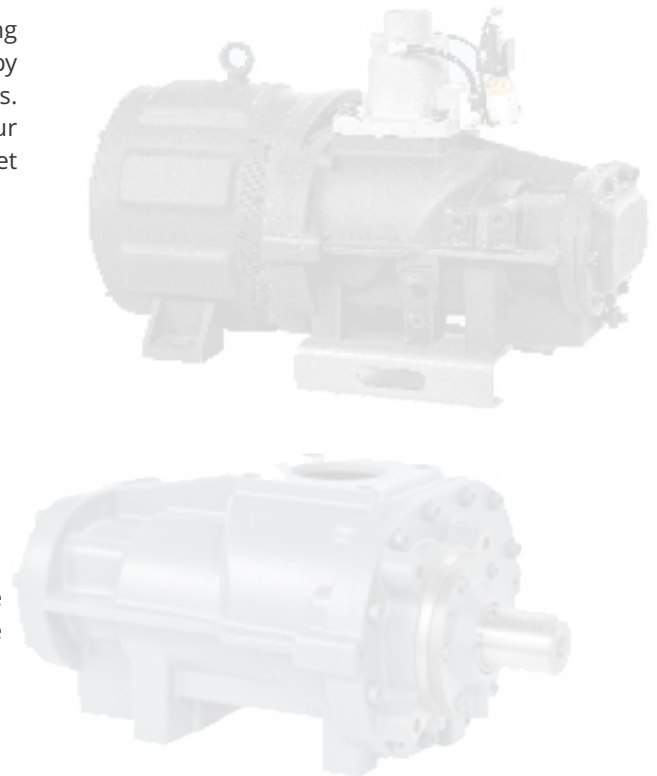
Our mission is to ensure customer delight with on-time supply of zero defect and quality products. The company today is a leading name in the category of Screw Compressors & Reciprocating Compressors particularly.

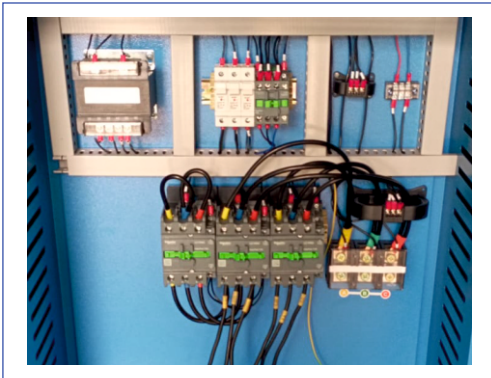
Our Vision

Innovation and continues improvement in all areas is our priority. We strive to deliver quality products while ensuring cost effectiveness. We aim to better our track seemed each day.

Our Success

Air Care Equipments is achieved the success today because of implementing latest technology in its Designing and production by following Model. Our company has been producing Receprocating Air Compressor, Air Receiver since 2005. Our manufacturing plant is located in Gurgaon, we manufacture a wide range of Industrial Air Compressors & Vacuum Pump. We are committed to provide products and services to our customer that meet the requirement and exceed their expectations.





CONTROL PANEL

Control Panel / starter has been put in the cold zone which ensure long life operation. Switchgears are also made of Schneider/ABB/Siemens or standard quality.

SEAMLESS PIPELINE & COMPRESSION FITTING

General air compressor manufacturers used flexible tube in internal pipelines system. But air compressor can not be avoided operating conditions: oil, temperature and pressure, causing accelerated aging in hose. Air Care could be using compression fittings of seamless steel pipe fittings to prevent pipeline leaks, while reducing all the pressure loss. We use Seamless, long life pipelines instead of short-lived hose pipes, which eliminates oil leakages.

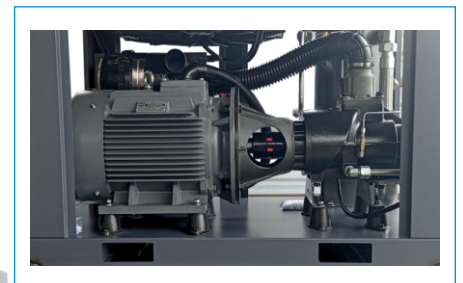


INTAKE VALVE WITH SAVING ENERGY

Intake valve with high-quality and high reliability effectively control the loading and unloading of machine, saving energy. Sol. valve service life is upto 2 million times more than the structure used to upgrade, no gap can be completely sealed, no need air cylinder pneumatic control, no seal diaphragm etc. wearing parts.

GEARLESS DIRECT DRIVE SCREW AIR COMPRESSOR

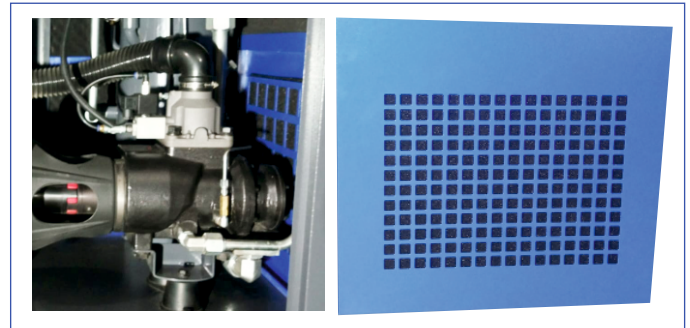
1:1 Direct drive is maintenance free coupling, which reduces number of components needed in gear drive, increasing reliability and durability through elimination of wear & transmission loss. Motor and the compressor are assembled to be embedded integral shaft direct connecting structure. Motor rotor is installed on the projecting shaft of the male rotor directly.



COMPRESSOR CONTROLLER



HIGH CAPACITY DUEL AIR FILTER



HIGH EFFICIENCY AFTERCOOLER



OIL SEPARATOR WITH HIGH PRECISION



SCROLL COMPRESSOR

FEATURES:

- Smooth and quiet operation
- Less torque variation compared to the reciprocating compressor
- Filtering accuracy of 10 Micron
- Large size cooler design
- Suitable Star-Delta Starter with contractors, CTs, etc.
- Emergency Stop Button
- Less maintenance and Longer life

Available in
3 HP & 5 HP
TANK MOUNTED
MACHINE



ENERGY
SAVING

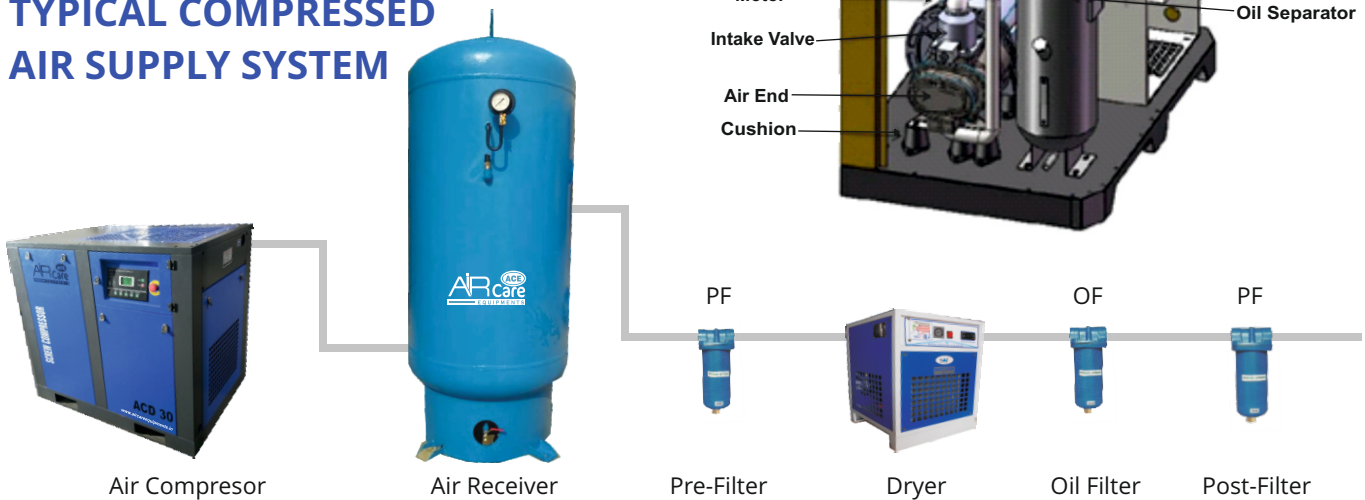
TECHNICAL SPECIFICATIONS

DIRECT DRIVE MODELS (D-Series)

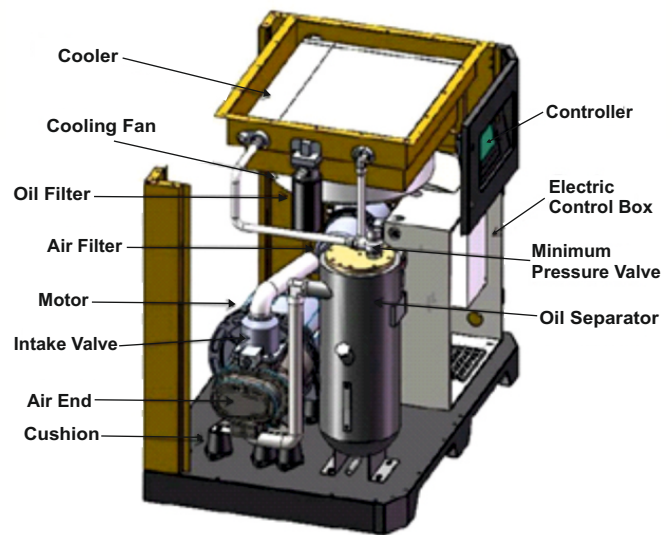
| COMPRESSOR MODEL | MOTOR | | FAD @ 8 kg/cm ² | FAD @ 10 kg/cm ² | FAD @ 13 kg/cm ² | SOUND LEVEL DB (±2) | DIMENSION LWH | WEIGHT KG. |
|------------------|-------|-----|----------------------------|-----------------------------|-----------------------------|------------------------|----------------|---------------|
| | KW | HP | CFM | CFM | CFM | | In MM | |
| ACD 03 | 2.2 | 3 | - | 12 | - | 68 | 1060X430X1080 | 135 |
| ACD 05 | 3.7 | 5 | - | 16 | - | 68 | 1160X460X1200 | 185 |
| ACD 7.5 | 5.5 | 7.5 | 26 | 24 | - | 68 | 900x600x800 | 220 |
| ACD 10 | 7.5 | 10 | 40 | 35 | 30 | 68 | 900x600x800 | 240 |
| ACD 15 | 11 | 15 | 64 | 55 | 39 | 68 | 1100x730x980 | 360 |
| ACD 20 | 15 | 20 | 85 | 72 | 60 | 70 | 1100x730x980 | 370 |
| ACD 25 | 18.5 | 25 | 110 | 95 | 78 | 71 | 1200x880x1080 | 510 |
| ACD 30 | 22 | 30 | 135 | 114 | 98 | 72 | 1200x880x1080 | 530 |
| ACD 40 | 30 | 40 | 185 | 165 | 124 | 72 | 1460x980x1230 | 650 |
| ACD 50 | 37 | 50 | 240 | 205 | 138 | 73 | 1460x980x1230 | 700 |
| ACD 60 | 45 | 60 | 275 | 240 | 212 | 74 | 1460x980x1230 | 780 |
| ACD 75 | 55 | 75 | 356 | 310 | 265 | 75 | 1750x1280x1590 | 1250 |
| ACD 100 | 75 | 100 | 475 | 425 | 346 | 76 | 1750x1280x1590 | 1350 |
| ACD 120 | 90 | 120 | 554 | 498 | 419 | 76 | 2450x1660x1700 | 1950 |



TYPICAL COMPRESSED AIR SUPPLY SYSTEM



Main Structure



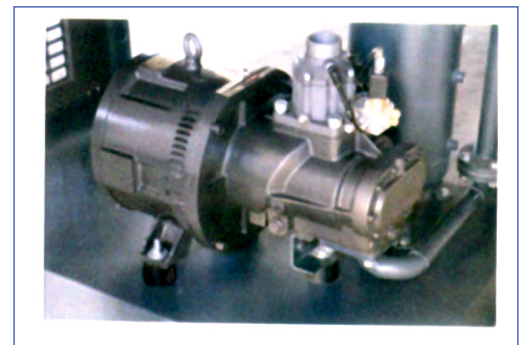
VSD WITH PM MOTOR

A REVOLUTION IN ENERGY SAVING VSD (VARIABLE SPEED DRIVE) WITH PM MOTOR

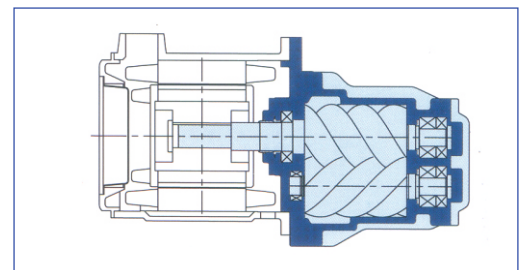
With the motive to reduce the Energy cost in our Air Compressors, we now introduce Energy saving Permanent Magnet Motors with our VSD models which decrease the Energy consumption substantially to save even more energy as well as money.

WHY PM MOTOR ?

- Interior Permanent Magnet (IPM) Motor **Efficiency upto 94.5%** which **Outperforms IE3 efficiency level.**
- On Average **20% Lower specific Energy Requirement** than the current VSD models.
- On top of energy savings. **Free Air Delivery (FAD) increase up to 12%** over the range.
- Compact small in size IPM motor has no bearings which means no wearing parts, no maintenance on motor side and no gear or belts, leading to a **Transmission Efficiency of 100%**



IPM Compressor



IPM One Shaft Structure

STANDARD QUALITY VSD



COMPRESSOR
CONTROLLER



FEATURES

SMOOTH START-UP

The VSD is soft starting, enabling controlled acceleration and deceleration which reduces stress on mechanical components and enhances system reliability. This results in increased life of the compressor.

SMART CONTROL

VSD keeps desired line pressure constant, adjusting automatically according to system air consumption by varying motor speed. The Compressor only consumes the energy needed to produce the compressed air required by the system. In fixed speed if compressor operates on no load, energy is wasted while no work is performed. VSD with PM motor saves up to 39% energy compared to conventional cycling.

A fixed speed compressor operates on a load-unload band of at least 10 PSI around the working pressure, whereas with VSD Compressor can be operated within a band of 2 PSI. For every 2 PSI reduction in operating pressure, there is 1% power saving.

VSD MODELS WITH PERMANENT MAGNET MOTOR (V-Series)

| COMPRESSOR MODEL | MOTOR | | FAD @ 8 kg/cm ² | FAD @ 10 kg/cm ² | FAD @ 13 kg/cm ² | SOUND LEVEL | DIMENSION LWH | WEIGHT |
|------------------|-------|-----|----------------------------|-----------------------------|-----------------------------|-------------|----------------|--------|
| | KW | HP | CFM | CFM | CFM | DB (±2) | In MM | KG. |
| ACV 10 | 7.5 | 10 | 40 | 35 | 30 | 68 | 900x600x800 | 240 |
| ACV 15 | 11 | 15 | 64 | 55 | 39 | 68 | 1100x730x980 | 360 |
| ACV 20 | 15 | 20 | 85 | 72 | 60 | 70 | 1100x730x980 | 370 |
| ACV 25 | 18.5 | 25 | 110 | 95 | 78 | 71 | 1200x880x1080 | 510 |
| ACV 30 | 22 | 30 | 135 | 114 | 98 | 72 | 1200x880x1080 | 530 |
| ACV 40 | 30 | 40 | 185 | 165 | 124 | 72 | 1460x980x1230 | 650 |
| ACV 50 | 37 | 50 | 240 | 205 | 138 | 73 | 1460x980x1230 | 700 |
| ACV 60 | 45 | 60 | 275 | 240 | 212 | 74 | 1460x980x1230 | 780 |
| ACV 75 | 55 | 75 | 356 | 310 | 265 | 75 | 1750x1280x1590 | 1250 |
| ACV 100 | 75 | 100 | 475 | 425 | 346 | 76 | 1750x1280x1590 | 1350 |
| ACV 120 | 90 | 120 | 554 | 498 | 419 | 76 | 2450x1660x1700 | 1950 |

VSD MODELS WITH PERMANENT MAGNET MOTOR (Two Stage Series)

| COMPRESSOR MODEL | MOTOR | | FAD @ 8 kg/cm ² | SOUND LEVEL | COMPRESSOR RPM |
|------------------|-------|-----|----------------------------|-------------|----------------|
| | KW | HP | CFM | DB (±2) | |
| ACVT 40 | 30 | 40 | 215 | 72 | 1450 |
| ACVT 50 | 37 | 50 | 258 | 73 | 1450 |
| ACVT 60 | 45 | 60 | 352 | 74 | 1450 |
| ACVT 75 | 55 | 75 | 405 | 75 | 1450 |
| ACVT 100 | 75 | 100 | 565 | 76 | 1450 |



OUR OTHER PRODUCTS



Air Compressor
10 HP



Air Compressor
5 HP



Refrigerated
Air Dryer



Heatless
Air Dryer

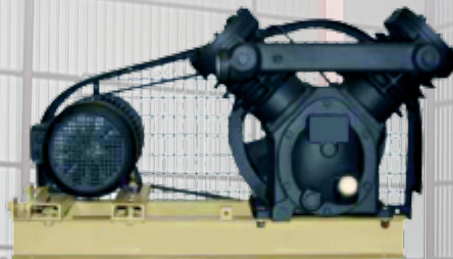


AIR ^{ACE} **Care**
EQUIPMENTS

Air Receiver



Oil Free
Compressor



Vacuum Pump



Three Stage Filter



Moisture Separator



AIR PURIFIER



FRL



AUTO DRAIN VALVE
220V

*Technical Specifications are subject to change without prior notice due to constant up gradation of products

AIR CARE EQUIPMENTS

Sales Off. : Plot No.6, Gali No.8 Lane No.1 Kadipur Ind. Area, Pataudi Road Gurugram -122001 (Haryana)

Mfg. Plant : Khewat No.197/202, Khasra No.13/11 Village - Garauli Khurd, Gurugram-122001 (Haryana)

Mobile : 9871793228, 9599293541, 9811298770

E-mail : info@aircareequipments.in, sales@aircareequipments.in

Website : www.aircareequipments.in | www.aircareequipment.co.in



QR CODE SCAN